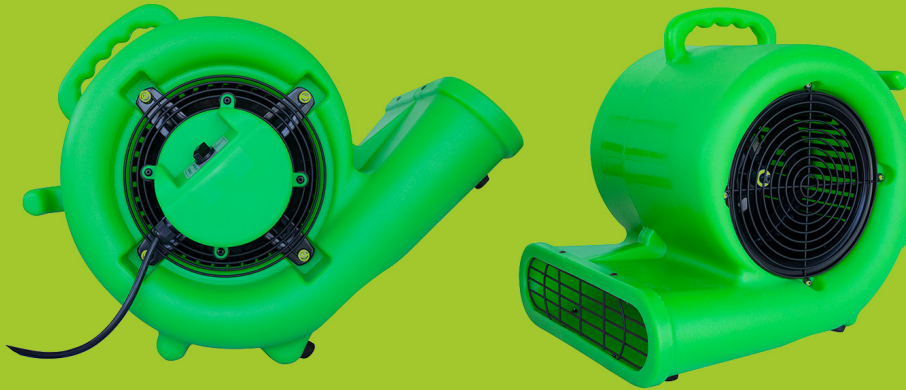


Instruction Manual

Approved to Australian Standards

Juvenate Centrifugal Air Mover



GENERAL INFORMATION

Packaging

Please **DO NOT** dispose of any packaging until you have checked the appliance is operational.

After removing the packaging ensure the contents are intact and complete.

In the unlikely event of missing parts; contact your retailer.

DO NOT leave children unattended with any of the packaging since it is a potential source of danger. Disposal of all packaging must be carried out responsibly and safely in accordance with your local authority regulations.

ALWAYS recycle the packaging material where possible.



WARNING! To reduce the risk of fire, electric shock or injury:

When using any electrically powered product, basic safety precautions should always be followed

PLEASE READ THE INSTRUCTIONS CAREFULLY AND IN FULL BEFORE USING THE PRODUCT

IMPORTANT SAFETY INSTRUCTIONS

WARNING - to reduce the risk of fire, electrical shock or injury to persons or property:

1. Always operate the product from a power source of the same voltage, frequency and rating as indicated on the product identification plate.
2. Do not operate any product with a damaged power cord or plug, after the appliance malfunctions, dropped or damaged in any way. Return the complete product to the place of purchase for inspection, repair or replacement.
3. Switch off and unplug from the power socket when not in use, before assembly or before cleaning.
4. Do not place objects on the product or allow objects to obstruct the inlet or outlet openings, or operate in close proximity to walls or curtains etc.
5. The use of attachments or accessories not recommended or sold by the product distributor may cause injury to persons or damage to property.
6. This product is intended for normal light commercial use only.
7. Do not attempt to dismantle the appliance.
8. Do not operate the appliance on a metal surface.
9. Do not use the appliance on artificially hot or humid conditions or allow to be used in a hazardous environment.
10. Do not attempt to lift or move the appliance with the power on or while the fan is running
11. Do not clean the appliance with organic solvent.
12. This appliance is not intended for use by persons (including children) with reduced physical, sensory or mental capabilities, or lack of experience and knowledge.
13. Children should not be left unsupervised with the appliance.
14. This instruction manual is an integral part of the appliance and should be stored for safe keeping and must always accompany the appliance in the event of ownership transfer or for reference to by a service engineer.

SAFETY FEATURES

Over Heat Protection

This fan motor is fitted with a thermal overload protection circuit to prevent overheating. If an over heat temperature is reached the unit will shut off automatically. Normal operation will resume when the appliance cools down.

In Case Of Overheating Cut Out Operation

1. Switch to the off position
 2. Remove the plug from the main socket outlet
 3. Check for obvious reasons that may have caused the appliance to over heat; for example: items placed over the inlet or outlet.
 4. Wait for 15 minutes before re-connecting the appliance to the mains outlet and continue with normal operation.
-

OPERATING INSTRUCTIONS

1. Ensure the control switch is powered to the off position before connecting the power supply
2. Connect the main plug to a suitable 240V ~ 50Hz supply
3. Switch to low medium or high speed as required.

SPECIFICATIONS

Juvenate Centrifugal Air Mover	
Power Supply	1/2 H.P. 230 Volts 50Hz
Certification	Certified to Australian Standards
Amps	1.9 / 2 / 2.3
RPM	1100 / 1200 / 1300
Variable Speed	Yes
Model	Model: LX-Y142-38
Net Weight	12 kg

CLEANING

- Before cleaning turn the unit off and unplug from the power supply
- To clean the dryer use a soft cloth to wipe off any dust.
- If very dirty use a damp cloth and wipe dry. Do not use any cleaning detergents, sprays or other chemicals, as they will damage the unit.
- Store the unit in a ventilated dry area when not in use.

WARRANTY

One 12 month Warranty

Retain this warranty information

Juvenate undertakes to replace or repair at its discretion goods should they become defective within 12 months solely as a result of faulty materials and workmanship.

In the unlikely event the goods become faulty or electronically unsafe, the owner must immediately cease use of the product, advise Juvenate by contacting the help desk on **1300 030 932** and return the goods to the point of purchase with proof of purchase and a full description of the fault to validate the warranty.

It is the responsibility of the owner to cover costs related to freight to and from the approved product repairer.

If the product has not been operated, maintained or if any attempt has been made to rectify, dismantle or alter the appliance in any way the warranty will be invalidated.

In the unlikely event of a problem, please contact our help desk on 1300 030 932

Our goods come with guarantees that cannot be excluded under the Australian Consumer Law. You are entitled to a replacement or refund for a major failure and compensation for any other reasonable foreseeable loss or damage. You are also entitled to have the goods repaired or replaced if the goods fail to be of acceptable quality and the failure does not amount to a major failure.

Juvenate Pty Ltd

10/93 Burnside Rd, Stapylton,
QLD Australia 4207

ABN: 80 135 130 399

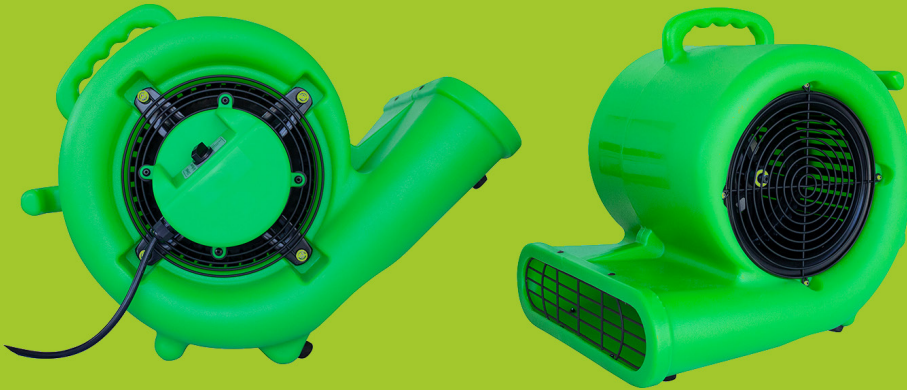
P: 1300 030 932

E: sales@juvenate.com.au

Instruction Manual

Approved to Australian Standards

Juvenate Low Profile Air Mover C35



Juvenate[®]
SPECIALTY RESTORATION EQUIPMENT

Emergency Hotline

1300 030 932

sales@juvenate.com.au

www.juvenate.com.au

